

# BSU GEOPHYSICS VSP OBSERVER'S LOG

Coordinate System Origin at Borehole

Casing Elevation: CE Unknown (+20m above G)

Azimuth of X-Axis 90°

Azimuth of Y-Axis 0° = North

Reference Phone: Offset

Azimuth

Elev. E = (CE - 0.2m)

X = 0

Y = +0.9

Channel Configuration:

Borehole Phone V=Channel 1

R=Channel 2

T=Channel 3

Reference Polarization: Azl.(deg.)

V 0

R 0

T 270

Vert.(deg.)

90

90

90

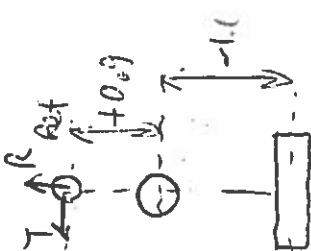
Date: 10/11/06 Location: Franklin & Oak

High Cut 1000 Low Cut 8 Sample Int. 0.002 Number of Samples 2500

Shot		Borehole Geophone			Source			Source Polarization	
Rec	File	Depth	Elev.	Offset	Azimuth	Elev.	X	Y	Vertical
1	FCL0001	15.5	<u>(CE - 37)</u>	<u>- depth</u>		<u>E</u>	<u>0</u>	<u>-1.0</u>	<u>90</u>
2	FCL0002	15.5					<u>0</u>	<u>-1.0</u>	<u>90</u>
3	FCL0003	15.0				<u>[(CE - 37) + 17]</u>	<u>0</u>	<u>-1.0</u>	<u>90</u>
4	FCL0004	15.0					<u>0</u>	<u>-1.0</u>	<u>90</u>
5	FCL0005	14.5					<u>0</u>	<u>-1.0</u>	<u>90</u>
6	FCL0006	14.5					<u>0</u>	<u>-1.0</u>	<u>90</u>
7	FCL0007	14.0					<u>0</u>	<u>-1.0</u>	<u>90</u>
8	FCL0008	14.0					<u>0</u>	<u>-1.0</u>	<u>90</u>
9	FCL0009	13.5					<u>0</u>	<u>-1.0</u>	<u>90</u>
10	FCL0010	13.5					<u>0</u>	<u>-1.0</u>	<u>90</u>

Note: Add 40.37 meters to depths to ref. to CLAMP

Water table 3.6 meters



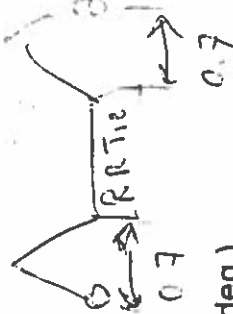
Revised  
9/10  
← erase  
Not Started  
Last

# BSU GEOPHYSICS VSP OBSERVER'S LOG

Coordinate System Origin at Borehole  
 Casing Elevation: 90  
 Azimuth of X-Axis 90  
 Azimuth of Y-Axis 0 = North

Reference Phone: Offset           
 Azimuth           
 Elev. 65 = CE - 0.2 m  
 X = 0  
 Y = 69

Channel Configuration:  
 Borehole Phone  
 V=Channel 1  
 R=Channel 2  
 T=Channel 3  
 Reference Phone  
 V=Channel 4  
 R=Channel 5  
 T=Channel 6



Reference Polarization: Azi.(deg.) Vert.(deg.)  
 V 0 0  
 R 0 90  
 T 270 90

Date: 10 AUG 94 Location: Franklin + Cule  
 High Cut 1000 Low Cut 8 Sample Int. 6002 Number of Samples 2500

Shot		Borehole Geophone			Source				Source Polarization		
Rec	File	Depth	Elev.	Offset	Azimuth	Elev.	X	Y	Azimuth	Vertical	
11	FCL0011	13.0				0	0	-1.0	90	90	
12	FCL0012	13.0				0	0	-1.0	270	90	
13	FCL0013	12.5				0	0	-1.0	90	90	
14	FCL0014	12.5				0	0	-1.0	270	90	
15	FCL0015	12.0				0	0	-1.0	90	90	
16	FCL0016	12.0				0	0	-1.0	270	90	
17	FCL0017	11.5				0	0	-1.0	90	90	
18	FCL0018	11.5				0	0	-1.0	270	90	
19	FCL0019	11.0				0	0	-1.0	90	90	
20	FCL0020	11.0				0	0	-1.0	270	90	

1427 217

# BSU GEOPHYSICS VSP OBSERVER'S LOG

Coordinate System Origin at Borehole

Casing Elevation: 70'

Azimuth of X-Axis 90°

Azimuth of Y-Axis 0° = North

Reference Phone: Offset

Azimuth 0

Elev. CE - 0.2 m

X = 0

Y = +0.90

Channel

Configuration: Borehole Phone

V=Channel 1

R=Channel 2

T=Channel 3

Reference Phone

V=Channel 4

R=Channel 5

T=Channel 6

Reference Polarization: Azl. (deg.)

V 0

R 0

T 270

Vert. (deg.)

0

90

90

Date: 10 AUG 94 Location: Franklin + Cole

High Cut 1000 Low Cut 8 Sample Int. .0002 Number of Samples 2500

Shot		Borehole Geophone		Source				Source Polarization	
Rec	File	Depth	Elev.	Offset	Azimuth	Elev.	X	Y	Vertical
21	F000021	10.5				6	0	-1.0	90
22	F000022	10.5					0	-1.0	90
23	F000023	10.0					0	-1.0	90
24	F000024	10.0					0	-1.0	90
25	F000025	9.5					0	-1.0	90
26	F000026	9.5					0	-1.0	90
27	F000027	9.0					0	-1.0	90
28	F000028	9.0					0	-1.0	90
29	F000029	8.5					0	-1.0	90
30	F000030	8.5					0	-1.0	90

BSU 3N 2

# BSU GEOPHYSICS VSP OBSERVER'S LOG

Coordinate System Origin at Borehole  
 Casing Elevation: 96  
 Azimuth of X-Axis 0  
 Azimuth of Y-Axis North

Reference Phone: Offset  
 Azimuth 90  
 Elev. 96 = 96 - 0.2 hr  
 X = 0  
 Y = +0.9

Channel Configuration:  
 Borehole Phone  
 V=Channel 1  
 R=Channel 2  
 T=Channel 3

Reference Polarization:  
 V=Channel 1  
 R=Channel 2  
 T=Channel 3

Date: 10 AUG 94 Location: Franklin Lake

High Cut 1000 Low Cut 8 Sample Int. .0002 Number of Samples 2500

Shot		Borehole Geophone			Source				Source Polarization	
Rec	File	Depth	Elev.	Offset	Azimuth	Elev.	X	Y	Azimuth	Vertical
31	FL00031	8.0					0	-1.0	90	90
32	FL00032	8.0					0	-1.0	270	90
33	FL00033	7.5					0	-1.0	90	90
34	FL00034	7.5					0	-1.0	270	90
35	FL00035	7.0					0	-1.0	90	90
36	FL00036	7.0					0	-1.0	270	90
37	FL00037	6.5					0	-1.0	90	90
38	FL00038	6.5					0	-1.0	270	90
39	FL00039	6.0					0	-1.0	90	90
40	FL00040	6.0					0	-1.0	270	90

10 AUG 94

# BSU GEOPHYSICS VSP OBSERVER'S LOG

Coordinate System Origin at Borehole  
 Casing Elevation: 90  
 Azimuth of X-Axis 0  
 Azimuth of Y-Axis 0 North

Reference Phone: Offset \_\_\_\_\_  
 Azimuth \_\_\_\_\_  
 Elev. 0  
 X= 0  
 Y= +1.2

Channel Configuration: Borehole Phone  
 V=Channel 1  
 R=Channel 2  
 T=Channel 3

Reference Polarization: Azl.(deg.) Vert.(deg.)  
 V 0  
 R 0  
 T 270

Date: 10 AUG 94 Location: Franklin + Cole  
 High Cut 1000 Low Cut 8 Sample Int. 0002 Number of Samples 2500

Shot		Borehole Geophone			Source				Source Polarization	
Rec	File	Depth	Elev.	Offset	Azimuth	Elev.	X	Y	Azimuth	Vertical
41	FC00041	5.5				<u>0</u>	0	-1.0	90	90
42	FC00042	5.5				<u>0</u>	0	-1.0	270	90
43	FC00043	5.0				<u>0</u>	0	-1.0	90	90
44	FC00044	5.0				<u>0</u>	0	-1.0	270	90
45	FC00045	4.5				<u>0</u>	0	-1.0	90	90
46	FC00046	4.5				<u>0</u>	0	-1.0	270	90
47	FC00047	4.0				<u>0</u>	0	-1.0	90	90
48	FC00048	4.0				<u>0</u>	0	-1.0	270	90
49	FC00049	3.5				<u>0</u>	0	-1.0	90	90
50	FC00050	3.5				<u>0</u>	0	-1.0	270	90

6-5 547

# BSU GEOPHYSICS VSP OBSERVER'S LOG

Coordinate System Origin at Borehole  
 Casing Elevation: \_\_\_\_\_  
 Azimuth of X-Axis 90  
 Azimuth of Y-Axis 0 = North

Reference Phone: Offset \_\_\_\_\_  
 Azimuth \_\_\_\_\_  
 Elev. 6  
 X= 0  
 Y= +0.4

Channel Configuration:  
 Borehole Phone  
 V=Channel 1  
 R=Channel 2  
 T=Channel 3

Reference Polarization: Azl.(deg.) Vert.(deg.)  
 V 0 0  
 R 0 90  
 T 270 90

Date: 10 AUG Location: Franklin & Cole  
 High Cut 1000 Low Cut 8 Sample Int. .0002 Number of Samples 2500

Shot		Borehole Geophone			Source					Source Polarization	
Rec	File	Depth	Elev.	Offset	Azimuth	Elev.	X	Y	Azimuth	Vertical	
51	FL00051	3.0					0	-1.0	90	90	
52	FL00052	3.0					0	-1.0	270	90	
53	FL00053	2.5					0	-1.0	90	90	
54	FL00054	2.5					0	-1.0	270	90	
55	FL00055	2.0					0	-1.0	90	90	
56	FL00056	2.0					0	-1.0	270	90	
57	FL00057	1.5					0	-1.0	90	90	
58	FL00058	1.5					0	-1.0	270	90	
59	FL00059	1.0					0	-1.0	90	90	
60	FL00060	1.0					0	-1.0	270	90	

Brill ~~0~~  
 176 647

Coordinate System Origin at Borehole  
Casing Elevation: \_\_\_\_\_  
Azimuth of X-Axis 90  
Azimuth of Y-Axis 0 = North

Reference Phone: \_\_\_\_\_

Offset \_\_\_\_\_

Azimuth \_\_\_\_\_

Elev. 6 \_\_\_\_\_

X = 0 \_\_\_\_\_

Y = 7.4 \_\_\_\_\_

Channel Configuration:	Borehole Phone	Reference Phone
V=Channel	<u>1</u>	V=Channel <u>4</u>
R=Channel	<u>2</u>	R=Channel <u>5</u>
T=Channel	<u>3</u>	T=Channel <u>6</u>

Reference Polarization:	Azi.(deg.)	Vert.(deg.)
V	0	0
R	0	90
T	270	90

Date: 10 AUG 74 Location: Franklin + Cole  
 High Cut 1000 Low Cut 8 Sample Int. 10002 Number of Samples 2500  
 T 270

[illegible]

# DOWN HOLE GEOPHONE FIELD CHECKLIST

DATE: 10 AUG 94

ODOMETER START: 54662

FINISH: 57673

## ITEMS AT GEOSCIENCES

ITEM	OUT	IN	COMMENT
SWC TOOL	✓	✓	
REF PHONE AND CABLES	✓	✓	
BISON	✓	✓	
TAPE MEASURE (50M)	✓	✓	
PULLEY AND WINCH ASSEM.	✓	✓	
DUMMY SWC TOOL	✓	✓	
SLEDGE HAMMER	✓	✓	
COMPASS	✓	✓	
ROCK HAMMER	✓	✓	
ROPE	✓	✓	
WD-40	✓	✓	
OBSERVER SHEETS/ MAPS	✓	✓	
GAS CARD/ KEYS	✓	✓	
GLOVES	✓	✓	

## ITEMS AT LINCOLN STREET

ITEM	OUT	IN	COMMENT
BISON CABLE BOX	✓	✓	
BISON TOOL BOX	✓	✓	
TOOL BOX	✓	✓	
TRIGGER CORD	✓	✓	
TRIPOD HEAD	✓	✓	
BATTERIES (2)	✓	✓	

## LOCATED IN GARAGE

TRIPOD LEGS	✓	✓	
RAIL ROAD TIE	✓	✓	
SHOVEL	✓	✓	
PICK	✓	✓	
2 FT IRON ROD	✓	✓	